



ERRIGAL COLLEGE FIRST YEAR INDUCTION PROGRAMME



MISSION STATEMENT

To enable each student to achieve their educational potential, in partnership with parents, based on the principles of caring, dignity, mutual respect and quality.



YOUR LEADERSHIP TEAM



Principal
Mr Mc Fadden



Deputy Principal
Ms Markham



Year Head
Ms Crossan

YOUR CARE TEAM



Guidance Counsellor
Ms Mc Gowan



Guidance Counsellor
Ms Mc Laughlin



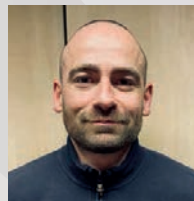
**Home School
Community Liaison**
Margaret Mc Ateer



School Completion
Annette Patton



Project Worker
Linda Gallagher



Project Worker
Jason Doherty

ADMINISTRATOR



Administrator
Catriona Kelly

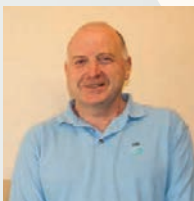


Photocopying
Eoghan Megannety

CARETAKING STAFF



Anna Mc Grath



Eddie Russell

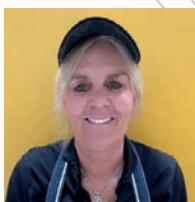


Vincent Mc Glynn

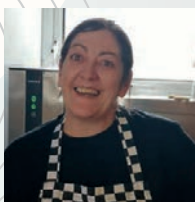


Chonthicha Mullen

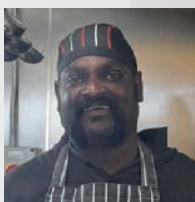
CANTEEN STAFF



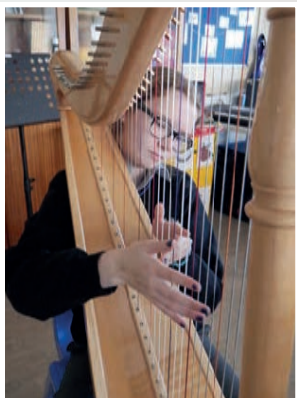
Carol Elliott



Joan Kerr



Gopal



DAY 1

- 8.30- 8.50** Students and Parents meet in the canteen.
- 8.50 - 9.00** Principal's Welcome
- 9.00 -9.10** Introduction to Form Teachers & Year Head
- 9.00 - 9.30** (HSCL meeting with parents)

FRIENDSHIP DAY

Students will get to know their new classmates and establish new friendships through a number of personal development and team building activities.

- 9.10 - 11** Ice-Breaking Activities – Getting to know you
- 11 - 11.15** Break with Year Head
- 11.15 - 13.15** Friendship Activities
Activities in class groups:
- Fun with Arts and Crafts
 - Sports event (Basketball/Rounders)
 - Board Games
 - Cooperative Team Games
 - Kahoot Table Quiz

13.15 - 13.55 Lunch

- 13.55 - 15.55** Continuation of Activities in class groups
- Fun with Arts and Crafts
 - Sports event (Basketball/Rounders)
 - Board Games
 - Cooperative Team Games
 - Kahoot Table Quiz

DAY 2

- 9.00 - 10.00** Introductions
Principal
Year Head
Form Teachers
Talk on timetables and day structure
- 10.00 - 11.00** Organisational Skills 1 (p11-p16)
Introduction: Timetable, begin workbook
Using combination locks and lockers
Student journal
- 11.00 - 11.15** Break in canteen
- 11:15 - 12:15** School Essentials:

1A	1B	1C	1D	1E
Lockers	Extra-curr	HSCL/SCP	Attendance	Guidance
Guidance	Lockers	Extra-curr	HSCL/SCP	Attendance
Attendance	Guidance	Lockers	Extra-curr	HSCL/SCP
HSCL/SCP	Attendance	Guidance	Lockers	Extra-curr
Extra-curr	HSCL/SCP	Attendance	Guidance	Lockers

- 12.15 - 13.15** **WORKSHOP 1:
SCHOOL ORIENTATION**
School Tour - walk on the right side!
Treasure Hunt
- Organisational Skills 2 (p20 - p36)
Code of Behaviour
Rights & Responsibilities
Worries & Concerns
- 13.15 - 13.55** Canteen Lunch
- 13.55 - 14.55** **WORKSHOP 2: PRIMARY SCHOOL**
- 14.55 - 15.55** **WORKSHOP 3: MOVING ON UP**



YEAR HEAD & FORM TEACHERS

Year Head - Ms Crossan

Class Name	Form Teacher
1A	Ms Roarty
1B	Ms Mc Gettigan
1C	Ms Mc Hugh
1D	Ms Higgins
1E	Mr Sellick

Principal: Mr Danny Mc Fadden

Deputy Principal: Ms Deirdre Markham



ERRIGAL COLLEGE

Windyhall, Letterkenny, Co. Donegal

Tel: 074 91 21047

Email: errigalcollege@donegaletb.ie

Web: www.errigalcollege.ie

Social: Twitter / Facebook / YouTube



etb

Bord Oideachais agus
Oiliúna Dhúin na nGall
Donegal Education and
Training Board

